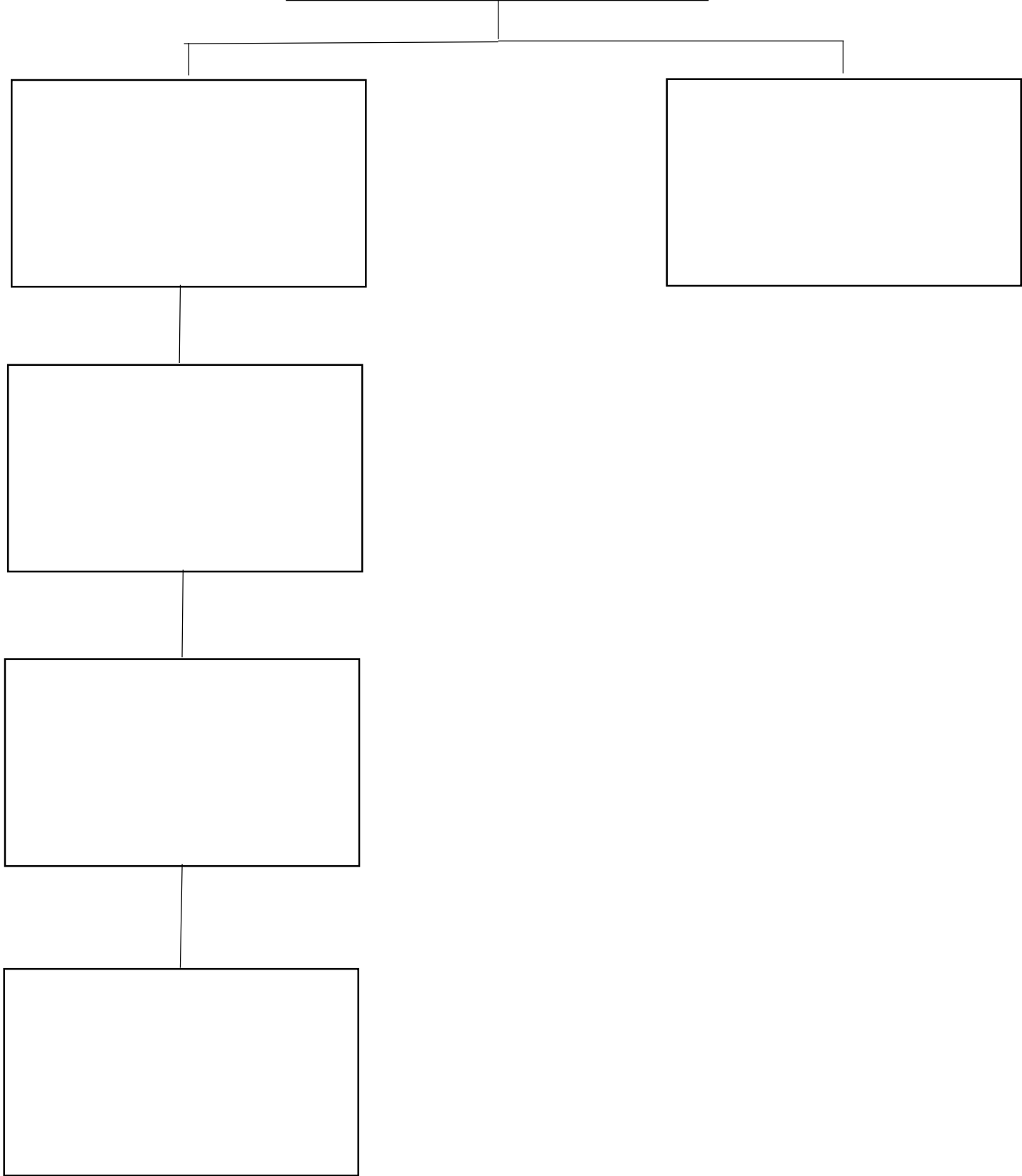
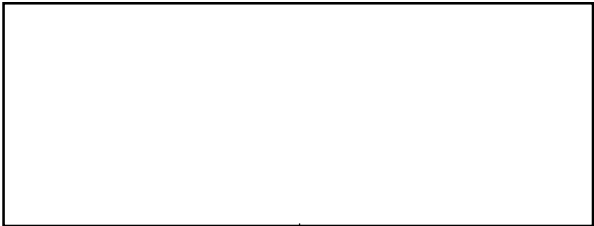


The Real Number  
System Notes

Name\_\_\_\_\_

Date\_\_\_\_\_



# Real Numbers

```
graph TD; RN[Real Numbers] --> R[Rational Numbers]; RN --> I[Irrational Numbers]; R --> Int[Integers]; R --> F[Fractions]; R --> D[Decimals]; Int --> W[Whole]; Int --> NI[Negative Integers]; W --> N[Natural]; W --> Z[Zero]; F --> PF[Proper Fractions]; F --> IF[Improper Fractions]; D --> TD[Terminating Decimals]; D --> RD[Repeating Decimals];
```

Rational Numbers

Irrational Numbers

Integers

Whole

Natural

**You Try!**

Identify the sets to which each of the following numbers belong by placing an 'X' in the appropriate boxes.

	<b>Number</b>	<b><u>N</u>atural Numbers</b>	<b><u>W</u>hole Numbers</b>	<b><u>I</u>ntegers</b>	<b><u>R</u>ational Numbers</b>	<b><u>I</u>rrational Numbers</b>	<b><u>R</u>eal Numbers</b>
1.	$-\sqrt{17}$						
2.	$-2$						
3.	$-\frac{9}{37}$						
4.	$0$						
5.	$-6.06$						
6.	$4.5\overline{6}$						
7.	$3.050050005\dots$						
8.	$18$						